

# CERTIFICATION

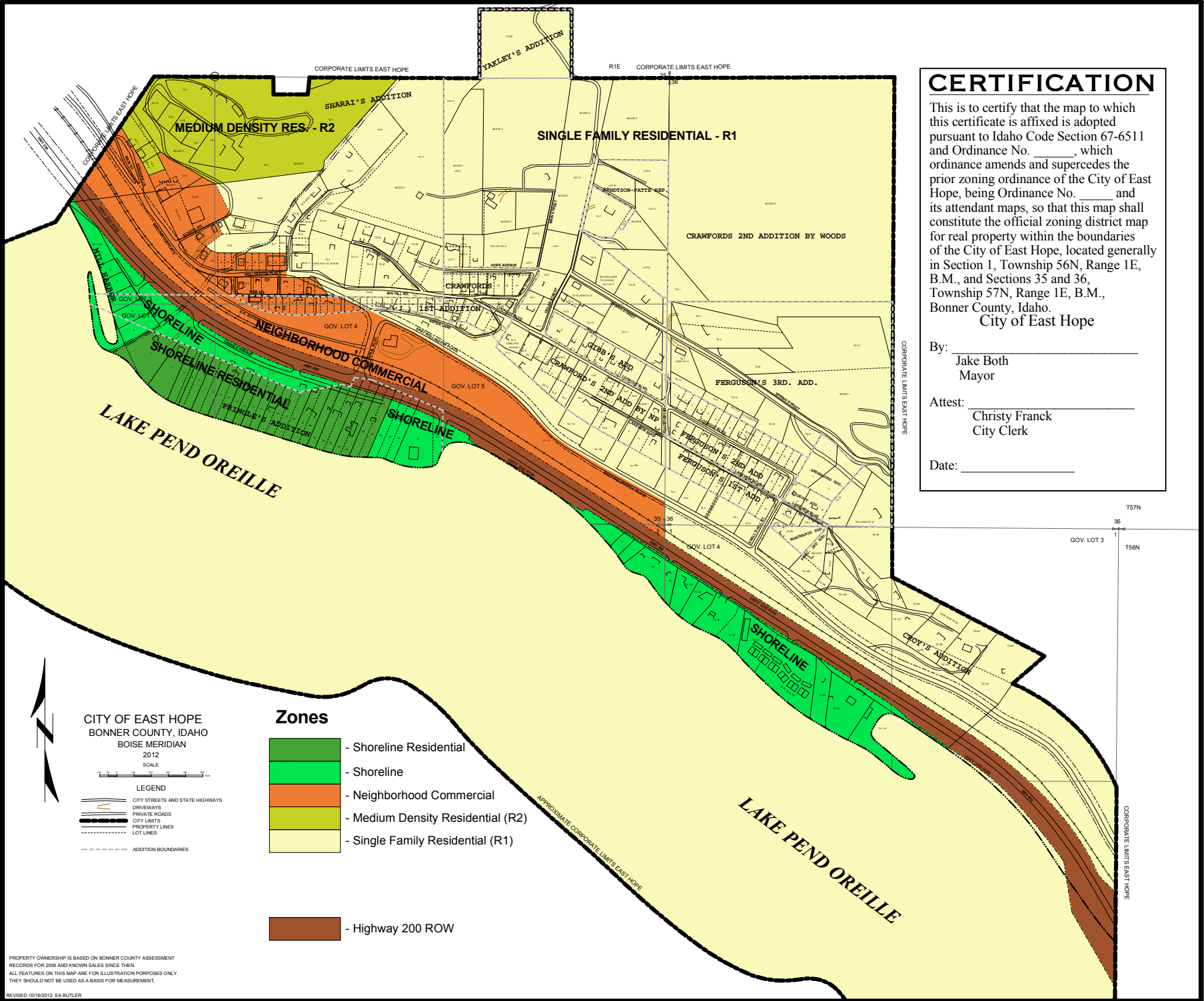
This is to certify that the map to which this certificate is affixed is adopted pursuant to Idaho Code Section 67-6511 and Ordinance No. \_\_\_\_\_, which ordinance amends and supercedes the prior zoning ordinance of the City of East Hope, being Ordinance No. \_\_\_\_\_ and its attendant maps, so that this map shall constitute the official zoning district map for real property within the boundaries of the City of East Hope, located generally in Section 1, Township 56N, Range 1E, B.M., and Sections 35 and 36, Township 57N, Range 1E, B.M., Bonner County, Idaho.

City of East Hope

By: \_\_\_\_\_  
 Jake Both  
 Mayor

Attest: \_\_\_\_\_  
 Christy Franck  
 City Clerk

Date: \_\_\_\_\_



CITY OF EAST HOPE  
 BONNER COUNTY, IDAHO  
 BOISE MERIDIAN  
 2012

SCALE

LEGEND

- CITY STREETS AND STATE HIGHWAYS
- DRIVEWAYS
- PRIVATE ROADS
- CITY LIMITS
- PROPERTY LINES
- LOT LINES
- ADDITION BOUNDARIES

**Zones**

- Shoreline Residential
- Shoreline
- Neighborhood Commercial
- Medium Density Residential (R2)
- Single Family Residential (R1)
- Highway 200 ROW

PROPERTY OWNERSHIP IS BASED ON BONNER COUNTY ASSESSMENT RECORDS FOR 2006 AND KNOWN SALES SINCE THEN. ALL FEATURES ON THIS MAP ARE FOR ILLUSTRATION PURPOSES ONLY. THEY SHOULD NOT BE USED AS A BASIS FOR MEASUREMENT.

REVISED 10/16/2012 EA BUTLER